



TEE TYPE STRAINERS

Standard Material Specification:

- Tee: A234-WPB
- Flanges: A105
- Outlets: A105
- STUD BOLTS: A193-B7
- NUTS: A194-2H
- Gaskets: Non-Asbestos
- *OTHER MATERIALS AVAILABLE

Dimensional Data: See Following Page.

Pressure Drop Information: See Pressure Drop Charts

Recommended Spare Parts:

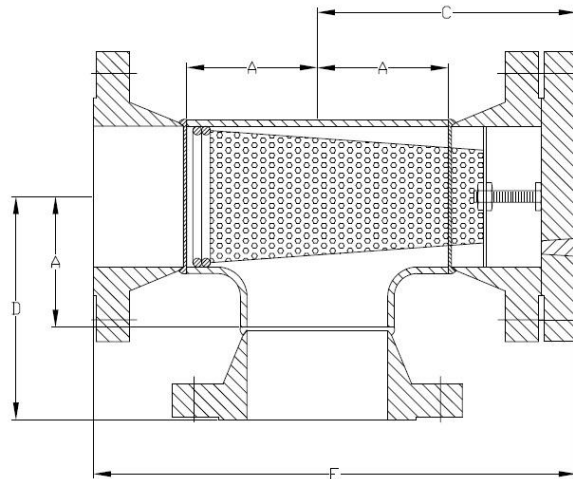
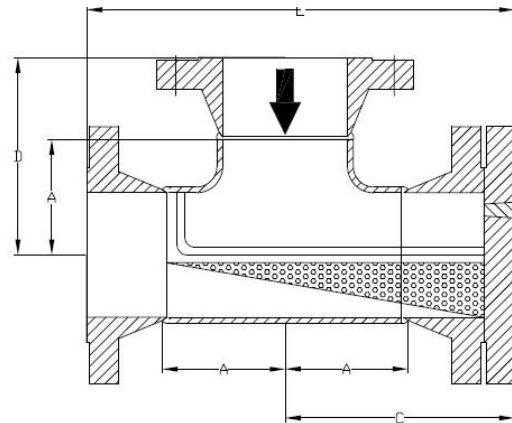
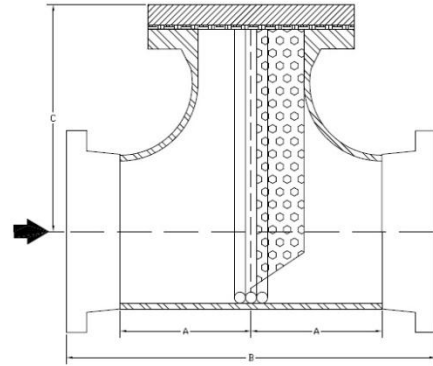
1. Basket
2. Gaskets for access opening
3. O-Rings for closures

Options:

1. Quick Opening Closures
2. Pressure connections
3. Blow down connections
4. Wedge-wire baskets
5. Drains and vents
6. Davit for blind flange

Code:

Standard design and fabrication is B31.3 other available codes are D.O.T., B31.1 B31.3 B31.4, B31.8, NACE and A.S.M.E. Section VIII, Division 1.





TEE TYPE STRAINERS

DIMENSIONAL DATA

PIPE SIZE	A	B 150#	B 300#	B 600#	B 900#	B 1500#	C 150#	C 300#	C 600#	C 900#	C 1500#
2"	2 1/2"	10 1/4"	10 3/4"	11 1/2"	13 3/4"	13 3/4"	6"	6 3/8"	7 1/8"	8 3/4"	8 3/4"
2.5"	3"	11 3/4"	12 1/4"	13"	15"	15"	6 7/8"	7 1/4"	8"	9 1/2"	9 1/2"
3"	3 3/8"	12 1/2"	13 1/4"	14"	15 1/2"	16 3/4"	7 5/16"	7 7/8"	8 5/8"	9 5/8"	10 5/8"
4"	4 1/8"	14 1/2"	15 1/4"	17"	18"	18 3/4"	8 5/16"	9"	10 1/2"	11 1/8"	11 7/8"
5"	4 7/8"	17"	17 3/4"	19 1/2"	20 1/2"	22 3/4"	9 9/16"	10 3/8"	11 7/8"	12 5/8"	14 5/8"
6"	5 5/8"	18 1/2"	19 1/4"	21 1/4"	23"	25 1/2"	10 3/8"	11 3/16"	12 7/8"	14 1/16"	16 3/8"
8"	7"	22 1/4"	23"	25 1/4"	27 1/2"	31 1/2"	12 3/8"	13 1/4"	15 3/16"	16 5/8"	19 3/4"
10"	8 1/2"	25 1/4"	26 1/2"	29 3/4"	32 1/4"		13 15/16"	15 1/4"	17 3/4"	19 1/4"	
12"	10"	29 1/4"	30 1/2"	33"	36 1/2"		16"	17 3/8"	19 1/2"	21 3/4"	
14"	11"	32 1/4"	33 1/2"	35 3/4"			17 5/8"	19"	21"		
16"	12"	34 1/4"	35 3/4"	38 3/4"			18 11/16"	20 1/4"	22 3/4"		
18"	13 1/2"	38 1/4"	39 3/4"	42 1/4"			20 13/16"	22 3/8"	24 3/4"		
20"	15"	41 5/8"	43"	45 3/4"			22 5/8"	24 1/8"	26 3/4"		
24"	17"	46 1/4"	47 1/2"	50 3/4"			25 1/8"	26 5/8"	29 3/4"		

PIPE SIZE	A	D 150#	D 300#	D 600#	D 900#	D 1500#	E 150#	E 300#	E 600#	E 900#	E 1500#
2"	2 1/2"	5 1/8"	5 3/8"	5 3/4"	6 7/8"	6 7/8"	11 1/8"	11 3/4"	12 5/8"	15 3/8"	15 3/8"
2.5"	3"	5 7/8"	6 1/8"	6 1/2"	7 1/2"	7 1/2"	12 3/4"	13 3/8"	14 1/4"	16 5/8"	16 5/8"
3"	3 3/8"	6 1/4"	6 5/8"	7"	7 3/4"	8 3/8"	13 9/16"	14 1/2"	15 3/8"	17 1/8"	18 3/4"
4"	4 1/8"	7 1/4"	7 5/8"	8 1/2"	9"	9 3/8"	15 9/16"	16 5/8"	18 5/8"	19 7/8"	20 3/4"
5"	4 7/8"	8 1/2"	8 7/8"	9 3/4"	10 1/4"	11 3/8"	18 1/16"	19 1/4"	21 3/8"	22 5/8"	25 3/4"
6"	5 5/8"	9 1/4"	9 5/8"	10 5/8"	11 1/2"	12 3/4"	19 5/8"	20 13/16"	23 1/4"	25 5/16"	28 7/8"
8"	7"	11 1/8"	11 1/2"	12 5/8"	13 3/4"	15 3/4"	23 1/2"	24 3/4"	27 9/16"	30 1/8"	35 1/4"
10"	8 1/2"	12 5/8"	13 1/4"	14 7/8"	16 1/8"		26 9/16"	28 1/2"	32 3/8"	35 1/8"	
12"	10"	14 5/8"	15 1/4"	16 1/2"	18 1/4"		30 5/8"	32 5/8"	35 3/4"	39 3/4"	
14"	11"	16 1/8"	16 3/4"	17 7/8"			33 3/4"	35 3/4"	38 5/8"		
16"	12"	17 1/8"	17 7/8"	19 3/8"			35 13/16"	38 1/8"	41 7/8"		
18"	13 1/2"	19 1/8"	19 7/8"	21 7/8"			39 15/16"	42 1/4"	45 5/8"		
20"	15"	20 13/16"	21 1/2"	22 7/8"			43 7/16"	45 5/8"	49 3/8"		
24"	17"	23 1/8"	23 3/4"	25 3/8"			48 1/4"	50 3/8"	54 7/8"		

DIMENSIONS FOR REFERENCE ONLY. CERTIFIED DRAWINGS ARE AVAILABLE WITH ORDER. DIMENSIONS 'C' AND 'E' INCLUDES 1/8" THICK GASKET THICKNESS AND 1/8" WELD GAP.