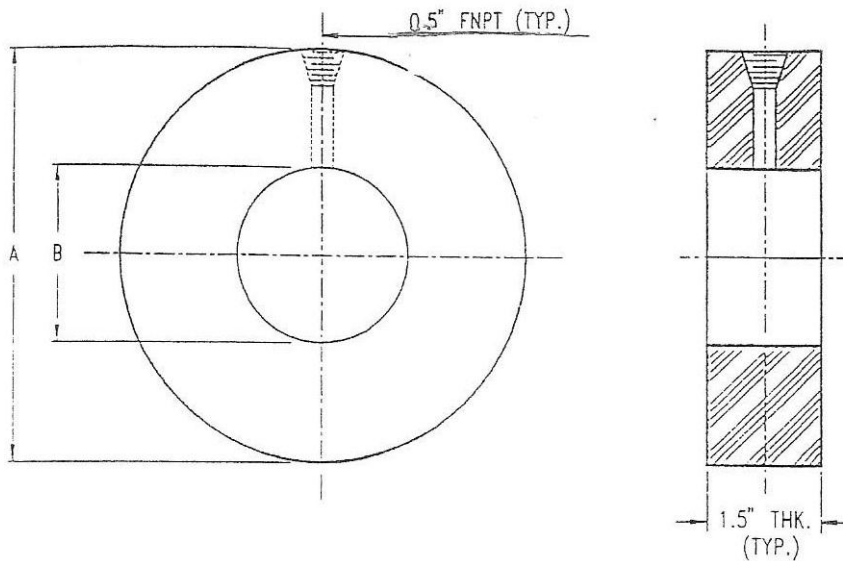




# RAISED FACE BLEED RINGS



"A" DIMENSION (INCHES)							APPROXIMATE WEIGHTS (LBS)				
SIZE	B	150#	300#	600#	900#	1500#	150#	300#	600#	900#	1500#
1	1.25	2.50	2.75	2.75	3.00	3.00	2.00	2	2	3	3
1 1/2	1.875	3.25	3.625	3.625	3.75	3.75	3	3	3	4	4
2	2.25	4.00	4.25	4.25	5.50	5.50	4.00	5	5	9	9
2 1/2	2.75	4.75	5.00	5.00	6.375	6.375	5	6	6	11	11
3	3.25	5.25	5.75	5.75	6.50	6.75	6.00	8	8	11	12
4	4.25	6.75	7.00	7.50	8.00	8.125	9.00	11	13	16	16
6	6.25	8.625	9.75	10.375	11.25	11.00	12.00	19	23	30	28
8	8.25	10.875	12.00	12.50	14.00	13.75	18.00	27	31	44	42
10	10.25	13.25	14.125	15.625	17.00	17.00	24.00	32	47	62	62
12	12.25	16.00	16.50	17.75	19.375	20.25	37.00	43	57	77	89

**ACCORDING TO ANSI / ASME B16.5 B31.3**

- LARGER SIZES AVAILABLE
- TAPS MAY BE SOCKET WELD OR THREADED
- 3/4" TAPS AVAILABLE
- MULTIPLE TAPS AVAILABLE
- AVAILABLE IN STAINLESS STEEL, ALLOYS AND MORE

<u>RATING / FACING</u>	<u>TYPE</u>	<u>MATERIAL</u>	<u>GASKET SURFACE</u>
150/RF	BLEED RING	A516-70	MILL
300/RF		304SS	SMOOTH
600/RF		316SS	SERRATED
900/RF		OTHER	
1500/RF			