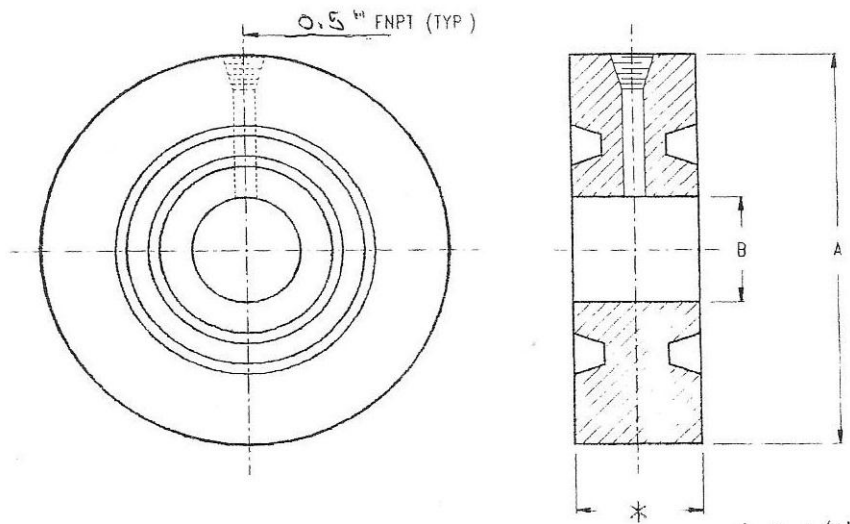




RING JOINT BLEED RINGS



DIMENSIONAL DATA (INCHES)

*2 1/8" THICK
** 2 3/8" THICK

*300# / *400# / *600#			*900#			*1500#			**2500#			
SIZE	A	B	RING	A	B	RING	A	B	RING	A	B	RING
1	2.75	1.32	R 16	2.812	1.32	R 16	2.812	1.32	R 16	3.25	1.32	R 18
1 1/2	3.562	1.90	R 20	3.625	1.90	R 20	3.625	1.90	R 20	4.5	1.90	R 23
2	4.25	2.375	R 23	4.875	2.375	R 24	4.875	2.375	R 24	5.25	2.375	R 26
2 1/2	5.00	2.875	R 26	5.375	2.875	R 27	5.375	2.875	R 27	5.875	2.875	R 28
3	5.75	3.50	R 31	6.125	3.50	R 31	6.625	3.50	R 35	6.625	3.50	R 32
4	6.875	4.50	R 37	7.125	4.50	R 37	7.625	4.500	R 39	8	4.50	R 38
6	9.50	6.625	R 45	9.50	6.625	R 45	9.75	6.625	R 46	11	6.625	R 47
8	11.875	8.625	R 49	12.125	8.625	R 49	12.5	8.625	R 50	13.375	8.625	R 51
10	14.00	10.75	R 53	14.25	10.75	R 53	14.625	10.75	R 54	16.75	10.75	R 55
12	16.25	12.75	R 57	16.50	12.75	R 57	17.25	12.75	R 58	19.5	12.75	R 60

*3,000# W.O.G. (6B)			
SIZE	A	B	RING
1 11/16			
1 13/16	3.75	1.812	R 20
2 1/16	5.50	2.062	R 24
2 9/16	6.375	2.562	R 27
3 1/16			
3 1/8	6.50	3.125	R 31
4 1/16	8.125	4.062	R 37

*5,000# W.O.G. (6B)			
SIZE	A	B	RING
1 11/16			
1 13/16	3.75	1.812	R 20
2 1/16	5.50	2.062	R 24
2 9/16	6.375	2.562	R 27
3 1/16			
3 1/8	6.75	3.125	R 35
4 1/16	8.125	4.062	R 39

***10,000# W.O.G. (6BX)			
SIZE	A	B	RING
1 11/16	4.687	1.687	150
1 13/16	4.875	1.812	151
2 1/16	5.375	2.062	152
2 9/16	6.25	2.562	153
3 1/16	7.375	3.062	154
3 1/8			
4 1/16	8.938	4.062	155

ACCORDING TO ANSI / ASME B16.5 B31.3